



WIFFFS

Whidbey Island Fabulous Fall

FIBER SALE

SEPTEMBER 17TH

PLEASE JOIN US

10AM - 5:00PM

Quality hand made products

by NW Fiber Artists

Hand-woven Hand-Spun
 Processed and raw fibers
 Dyed and Natural Colors
 Yarn - Scarves
 Garments - Shawls
 Roving - Fleece - Felt
 Sheep Skins & more

Fibers from Alpaca/Llama/
 Pygora Goats/Sheep
 Japanese Kumihimo Braiding
 Books/supplies/class
 information and more
 Demonstrations all day
 Animals to visit
 Fall harvest produce
 Complimentary refreshments



RAIN OR
SHINE!!

LOCATION:

Paradise Found Fiber Farm

4081 Springwater Ln • Clinton, Washington

lamalou@whidbey.com

360 579 1906

MAP: www.paradisefoundfiber.com/events

Directions:

From HWY 525 in Clinton take Cultus Bay Rd
 (Kens Korner), 2.7 miles South turn LEFT onto
 Springwater Ln • Third Driveway on Left #4081



Most artists take cash or check only



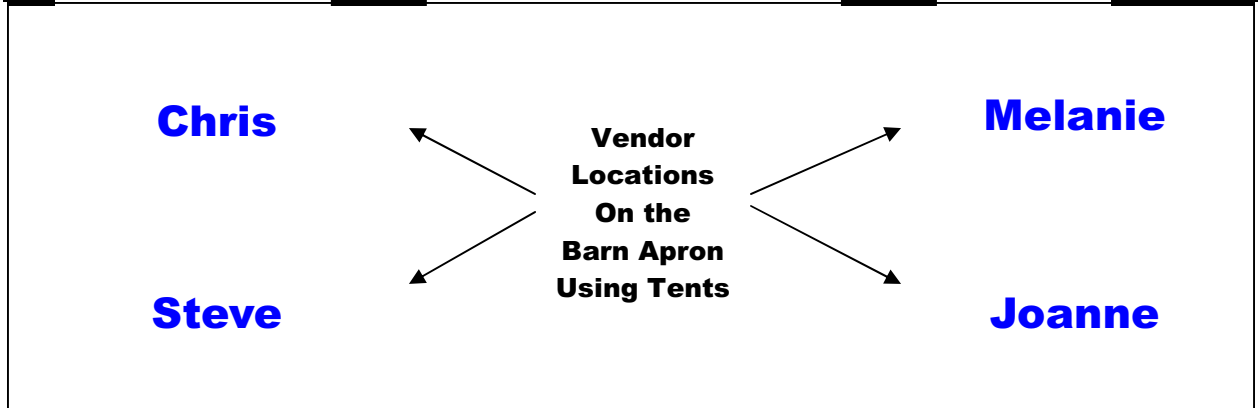
4th ANNUAL WHIDBEY ISLAND FABULOUS FALL FIBER SALE
September 17, 2011
VENDOR LIST

- [BJS Fiber Creations](#) 360 805 1616 bjseeler@aol.com www.bjsfibercreations.com
Barbara Seeler: Hand-dyed rovings, Merino/Tencel 50/50, Superfine Merino Superwash, Merino/Bamboo/Silk, 50/25/25, Panda Blend - Merino/Bamboo/Nylon, 60/30/10 and Merino/Silk, 50/50. Carded batts of mixed fibers. Hand-dyed and hand spun yarn. Hand knitted sweaters and hats.
- [Graydown Alpaca Ranch](#) Mount Vernon, WA 360 848 7858 skvan@hotmail.com www.graydownalpacas.com
Steve and Karen Vanderwerff: Mill processed alpaca yarn and rovings in many natural colors, hand knit hats, scarves and baby blankets from our alpacas and knit by us.
- [Mulberry Hill Alpacas](#) 4428 Point View Walk, Langley, WA 98260 Home: 360 221 4854 Cell: 360 929 8260
mulberry_wa@yahoo.com
Melanie Hill: Alpaca fleece, handspun, handwoven, knitted and crocheted articles, needle felted critters and painted silk.
- [Petterson Farms](#) 1523 Seattle Hill Rd, Bothell, WA 98012 206 999 6886 pettersonfarms@hotmail.com
www.pettersonfarms.com
Mona Lisa Petterson: Fleeces, roving, rug, worsted, sport and lace weight yarns in natural white and colored as well as dyed, blankets, hides, and much more from our nationally awarded flock of sheep. Also handmade knitting needles.
- [RainCity Fiber Arts](#) -. Raincityfiberarts@gmail.com www.raincityfiberarts.com
Tara Demulling: Hand dyed fibers and yarns. Merino/Silk, alpaca Blends, MCN yarns and Fibers. Specialize in fingering and lace weight yarns
- [Stonepath Textile Studio](#) by appointment: 360 678 4788 weavershand@earthlink.net www.stonepathstudio.com
Janis Saunders: Handwoven scarves, shawls and Japanese kumihimo (braided) jewelry.
- [Weaving Works Seattle](#) For local classes: marcyjohnson@whidbey.net www.weavingworks.com
 For supplies & Seattle classes: weavingworks@speakeasy.net
Marcy Johnson: Promoting her spinning classes, tools and books from the Weaving Works Seattle
- [Whidbey Woolies](#) linda@whidbeywoolies.com www.whidbeywoolies.com
Linda Lee: Hand-knitted then felted hats, scarves & purses from her pet alpacas and more.
- [Whoamule Farm](#) 360 579 1244 caim@whidbey.com www.whoamulefarm.com
Chris Lubinski: Shetland roving, Shetland top, yarn, natural colors and hand dyed.
- [Windy Hill Farm](#) 360 678 9130 martinis@whidbey.net
Joanne Martinis: Natural color and white fleeces and local mill processed roving: Gotland, Blue-faced Leicester, Border Leicester and crosses. Hand-dyed yarns and painted rovings
- [Host Farm- Paradise Found Fiber Farm](#) 360 579 1906 lamalou@whidbey.com www.paradisefoundfiber.com
Mary Donaty: Yarn, roving, felt sheets; hand spun & knitted, hats, scarves, cowls, shawls, hand-warmers, baby booties, baby sweaters, and more. Felted bags, purses, greeting cards, hand-warmers, all goods in natural & dyed fibers from Alpacas (Suri & Huacaya), Llama, & Pygora goat.



Note: Not to Scale!

Aisle Way To Tanya and the Llamas, Alpacas & Pygora Goats



- The Parking Crew-**
- Constance
 - John
 - Dave
 - Lou

Gravel Parking Area

Vendor Locations Across From the Barn Apron

Mary **Marcy** **Tara**
Fiber Shack **Tent** **Tent**



*WIFFFS 2011
Whidbey Island Fabulous Fall Fiber Sale
4th Annual Fiber Event*

The economy, the economy, definitely has had its hold on many of us. We as a group of artists always enjoy preparing our fibers for the public to see and feel for our Fall Fiber Event. This year we welcomed many from afar as well as local and were pretty much blessed with a fair weather day. A few wind gusts and scattered rain, but not too bad. There were several events going on here on Whidbey all the same weekend so folks had lots to choose from.

This year we added a free raffle, sign up to be on our mailing list and be eligible to win a fiber filled basket valued at \$140.00. Our winner is from Redmond, Barbara J. Enjoy all of the lovely fiber/yarns and more.

We thank those who shared part of their day with us. We wish you all a happy spinning/knitting/weaving year ahead. And thank you for another successful year.

*Thank you,
Mary
Paradise Found Fiber Farm*



WIFFFS Raffle Gift Basket 2011

\$140.00 value

And the winner

Barbara J. from Redmond, WA

Donations from:

Alpaca Balls Earrings / Whidbey Woolies

2.6 oz light sport weight yarn / Graydown Alpaca Ranch

Kumikimo Disk kit / BraidersHand

Yummy Jam / Rain City Fiber Arts

3 oz Hand Spun, Hand dyed Huacaya Alpaca Yarn / Paradise Found Fiber Farm

Needle Felted Sheep / Mulberry Hill Alpacas

2 oz 50/50 Merino / Tencel Blend Roving / BJS Fiber Creations

1 oz Soysilk/Cashmere Roving / Weaving Works Seattle

4 oz Hand Painted Shetland Top Roving / Whoamule Farm

7.4 oz Lincoln Roving / Petterson Farms

4 oz Blue Faced Leicester Roving / Windy Hill Farm



The following photo's were taking early WIFFFS Day as some of the vendors were setting up to give an overview of what we have to offer.

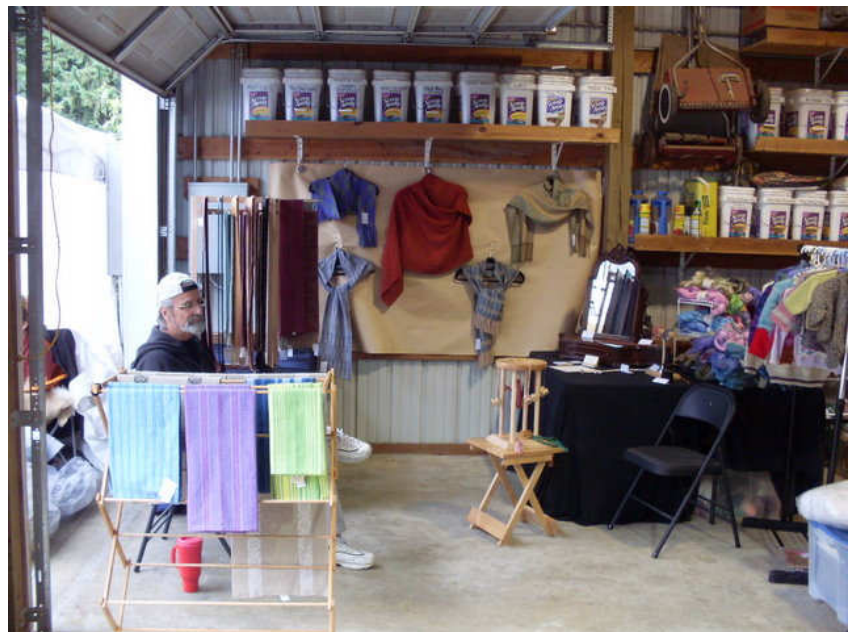


Graydown Alpaca Ranch
Steve and Karen Vanderwerff



Whoamule Farm
Chris Lubinski

Stonepath Textile Studio
Janis Saunders





BJS Fiber Creations
Barbara Seeler



Pettersson Farms
Monā Lisa Pettersson



Whidbey Woolies
Linda Lee



RainCity Fiber Arts
Tara Demulling



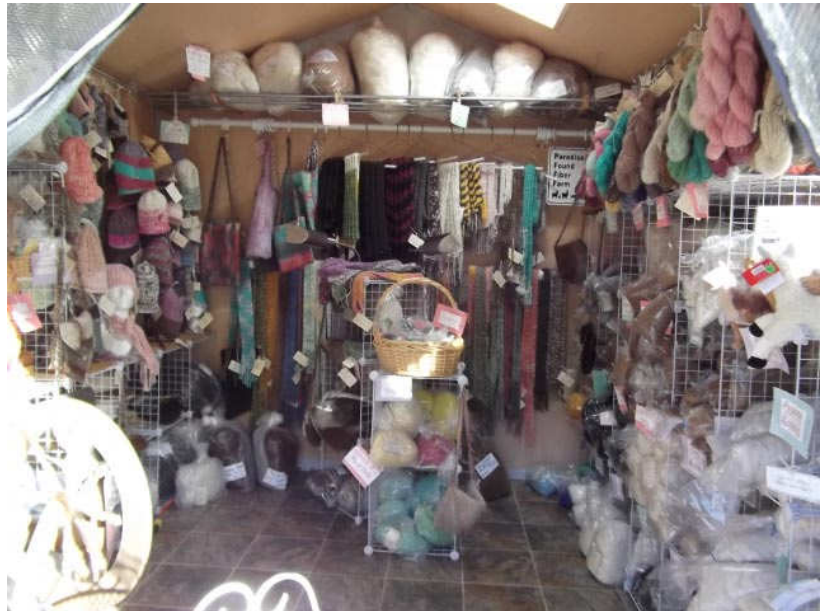
Weaving Works Seattle
Marcy Johnson

Produce and Complimentary
'Goodies' Corner
Annie Horton
[On the Right Talking to Linda Lee]





Host Farm - Paradise Found Fiber Farm
Mary Donaty



Not Shown Due to Timing:

Mulberry Hill Alpacas
Melanie Hill

Windy Hill Farm
Joanne Martinis